

#WorldWetlandsDay #WetlandsForOurFuture

*What are the impacts of
mining, cultivation, plantations
and human settlements
on South Africa's wetlands?*



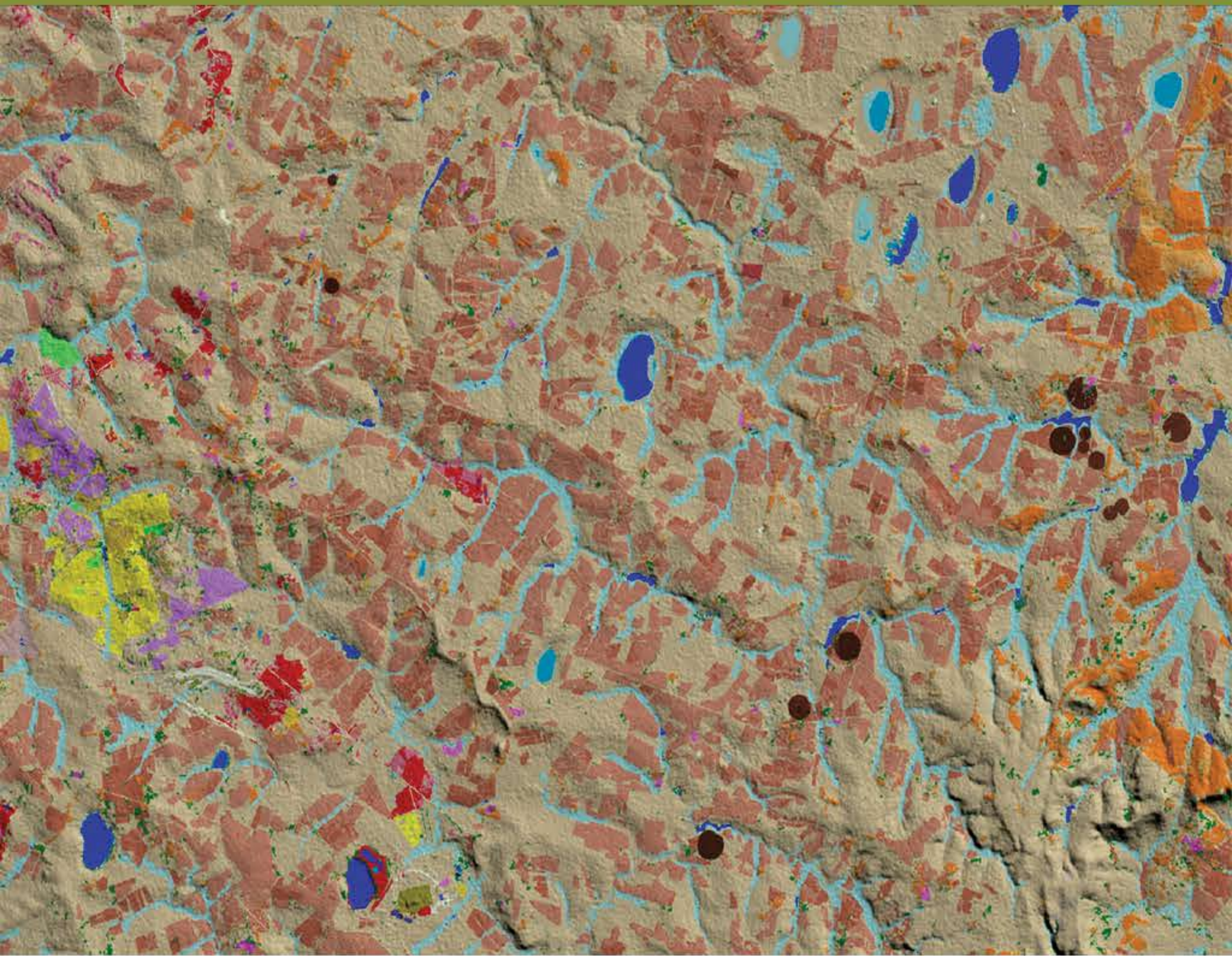
Managing our wetlands

Due to numerous competing land-use activities, wetlands have come under threat in South Africa and worldwide.

GEOTERRAIMAGE has produced up-to-date land-use and land-cover data for South Africa, to help role players understand and quantify the pressure on wetlands from surrounding land-uses (i.e. mining, agriculture, forestry). Furthermore, an indication of potential future human impacts on wetlands can be anticipated by integrating the past and present Human Settlement patterns data set with the wetlands data. Contact us for more information about complementary data sets.

In support of:

- Anticipating possible impacts on wetlands
- Identifying areas under threat
- Assisting with catchment planning
- Contributing towards forestry monitoring



*integrated spatial data sets
for assessing
wetland impacts in SA*