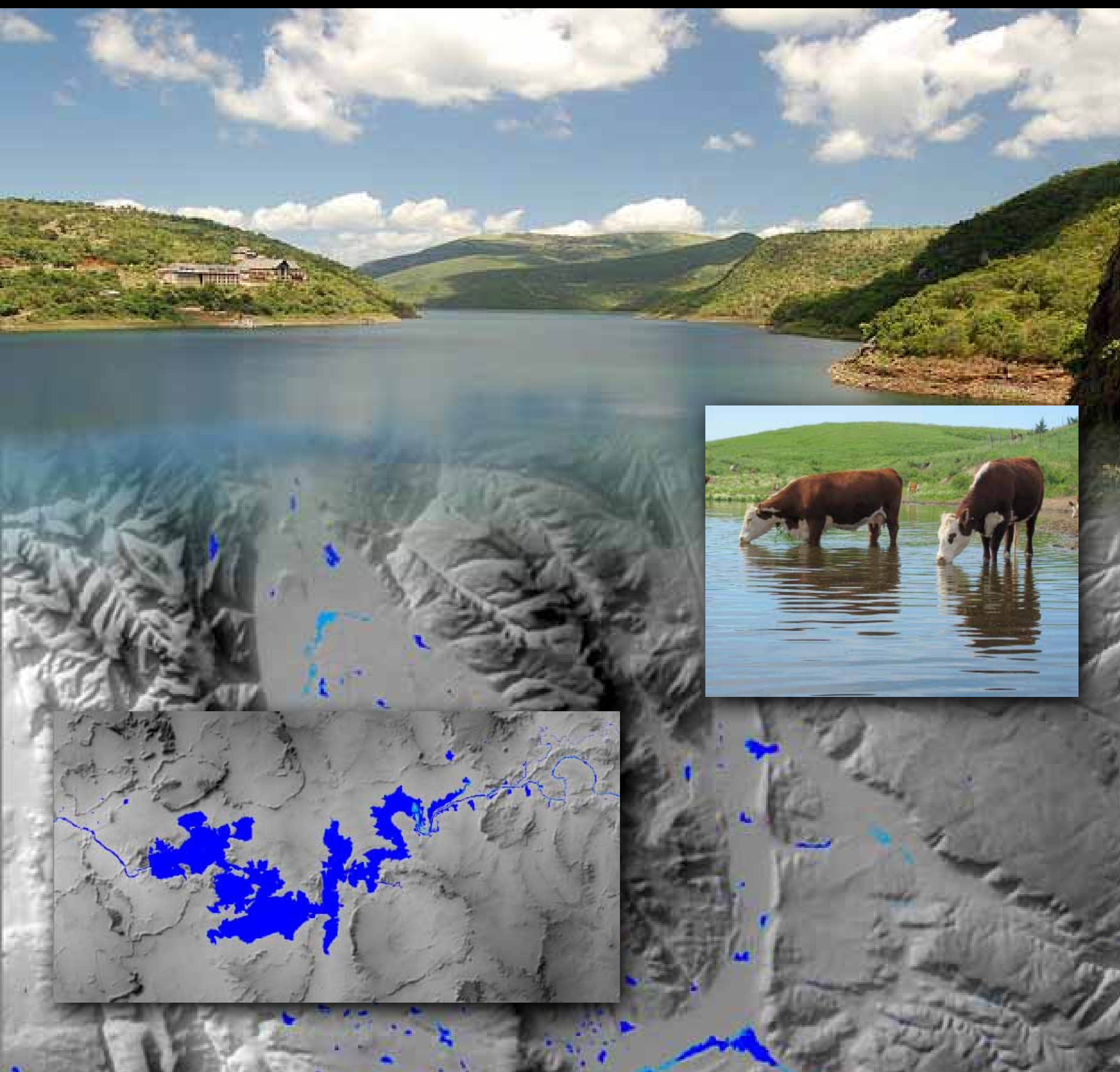


# Surface Water Inventory For South Africa


*Seasonal period: 2013 / 2014*

*Available as Spatial & Non-Spatial data  
Seasonal & Permanent Surface water*



## IN SUPPORT OF:

- Hydrological analysis
- Flood forecasting
- Drought monitoring
- Catchment planning
- Water extraction monitoring
- Integrated Water Resource Management



Catchment Management Area	Permanent Water ha	Permanent Water %	Seasonal Water ha	Seasonal Water %
Catchment 1	100 ha	2.9%	655 ha	1.9%
Catchment 2	34 500 ha	12.1%	20 841 ha	7.3%
Catchment 3	5320 ha	4.3%	10 640 ha	8.6%

**Surface water  
area & location  
statistics**