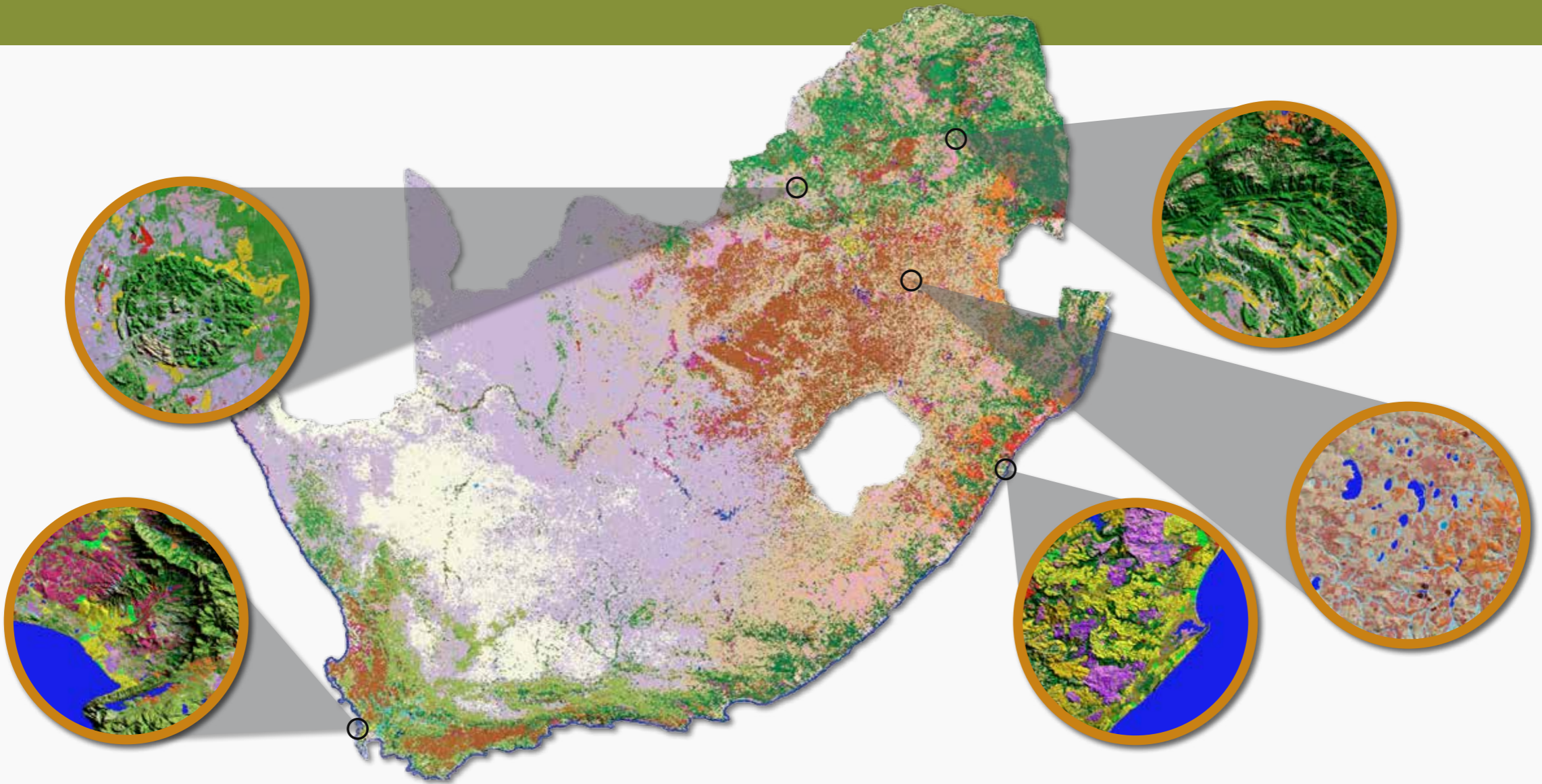


# Launch of the RSA National Land Cover 2013/2014 dataset



Parent Class	Subclasses
Water	Permanent / Seasonal
Wetlands	Wetlands
Forest	Indigenous Forest
Thicket & Dense Bush	Dense Bush / Thicket & Tall Dense Shrubs
Woodland / Open Bush	Woodland and Open Bush-land
Grassland	Grassland
Shrub-land	Low Shrub-land / Low Shrub-land: Fynbos
Cultivated	Commercial Annual / Pivot / Permanent Orchards / Permanent Vines / Subsistence *
Plantations	Mature Trees / Young Trees / Temporary Clear- Felled Stands
Mine	BareSpace / Semi-bare / Mine water Seasonal / Mine water Permanent / Mine Buildings
Bare	Erosion dongas and gullies / Bare (Non) Vegetated
Built-up	Commercial / Industrial / Sport & Golf Courses Informal / Residential / Small Holdings / Township / Village / Built-up **

\* This includes High, Medium & Low NDVI Profile

\*\* This includes Tree, Bush, Grass Dominated & Bare Surface

GEO TERRA IMAGE (Pty) Ltd is proud to be part of the **South African National Land-Cover (2013/14) Open Data License** initiative.

This data is integral to national decision making and policy implementation. The dataset is available from the Department of Environmental Affairs, EGIS website: <http://egis.environment.gov.za>

GTI is now able to rapidly generate standardised Landsat image derived land-cover data, for both current and historical landscapes, globally.