

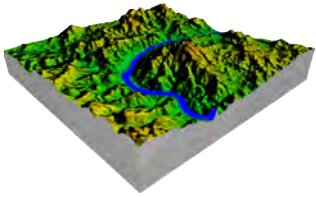


DATA PRODUCT SHEET

# SWAZILAND NATIONAL BASELINE LAND COVER

The GEOTERRAIMAGE, 2013-14 Swaziland National Baseline land-cover © dataset, has been generated from multi-seasonal, 30 metre resolution Landsat 8 satellite imagery, captured between April 2013 and June 2014. The land-cover dataset provides seamless data coverage for the whole country. A hill-shaded version is also available for backdrop applications and functions.

The 7 x class land-cover product represents a foundation level land cover, with additional levels of classification to be released subsequently.



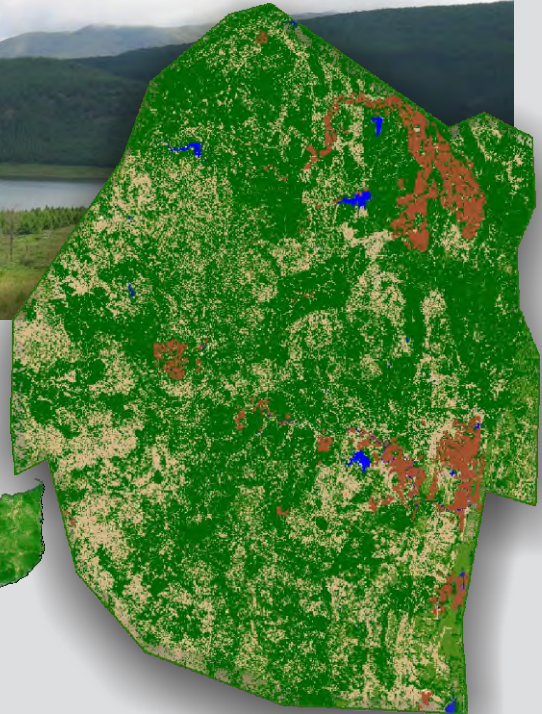
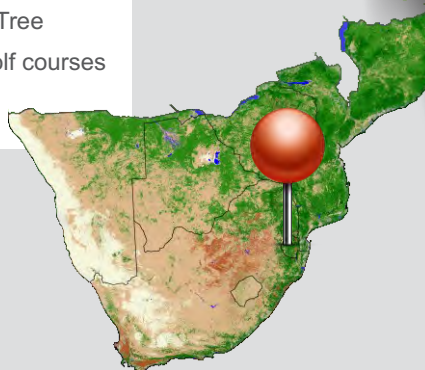
## CORE QUESTIONS

- How will a national development corridor impact the vegetation cover across the country?
- What percentage of Swaziland is covered in low vegetation & grassland?
- What extent of the country has been commercially cultivated?



**Coverage:** Swaziland  
**Formats:** Raster files: 30 m cells (Erdas img)  
**Attributes:** 7 classes: Water, Bare, Low Vegetation & grassland, Tree / Bush dominated, Tree Dominated, Cultivated, Sports & Golf courses  
**Latest release:** 2014

**Swaziland**



## RELATED DATA LAYERS:

- Land Cover for South Africa
- Land Cover for Namibia
- Land Cover for Botswana
- Land Cover for Mozambique
- Land Cover for Zimbabwe
- Land Cover for Lesotho

location-intelligence  
and **spatial**  
indicators

