

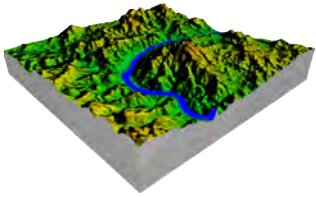


## DATA PRODUCT SHEET

# SOUTHERN AFRICA REGIONAL LAND COVER

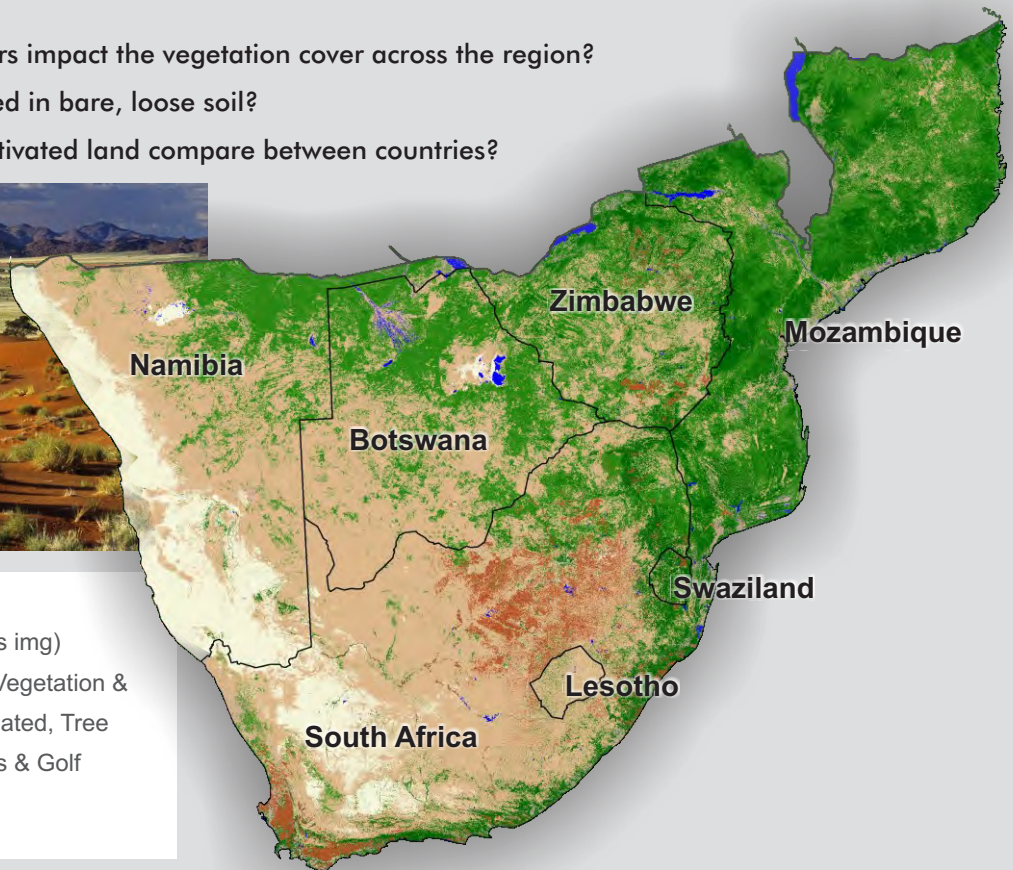
The GEOTERRAIMAGE, 2013-14 Southern Africa land-cover © dataset, has been generated from multi-seasonal, 30 metre resolution Landsat 8 satellite imagery, captured between April 2013 and June 2014. The dataset provides seamless baseline land cover across South Africa, Swaziland, Lesotho, Namibia, Botswana, Zimbabwe and Mozambique, and a portion of southern Malawi. A hill-shaded version is also available for backdrop applications and functions.

The 7 x class land-cover product represents a foundation level land cover, with additional levels of classification to be released subsequently.



### CORE QUESTIONS

- How will regional development corridors impact the vegetation cover across the region?
- What percentage of Botswana is covered in bare, loose soil?
- How does the extent of commercial cultivated land compare between countries?



<b>Coverage:</b>	Southern Africa - 7 Countries
<b>Formats:</b>	Raster files: 30 m cells (Erdas img)
<b>Attributes:</b>	7 classes: Water, Bare, Low Vegetation & grassland, Tree / Bush dominated, Tree Dominated, Cultivated, Sports & Golf courses.
<b>Latest release:</b>	2014

### RELATED DATA LAYERS:

- Land Cover for Namibia
- Land Cover for Botswana
- Land Cover for Zimbabwe
- Land Cover for Mozambique
- Land Cover for Swaziland
- Land Cover for Lesotho

location-intelligence  
and **spatial**  
indicators

