



DATA LAYER SHEET

SA NATIONAL SETTLEMENTS LAYER

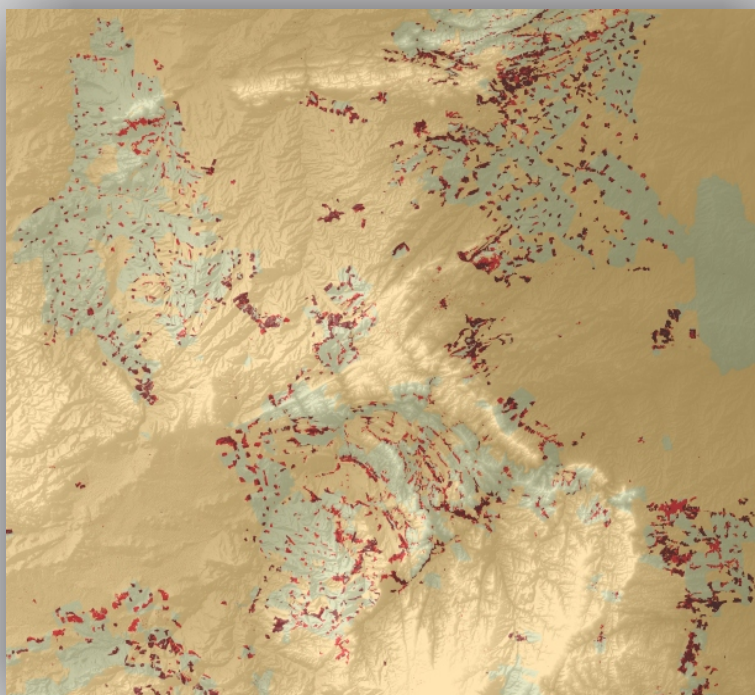
The **National Population/Settlement Distribution** © data provides a better understanding of the spatial extent of population concentrations within South Africa. A population figure is modelled for each settlement footprint. Footprint size and population can be summarised for any Geospatial area of interest with Enumeration Area (EA) being the default reporting level. Each EA is also quantified in terms of a 4-class description.

The dataset is ideal for measuring the proximity of Settlement footprints to specified planned or existing features or activities. This data can also be used to quantify the customer catchment.



CORE QUESTIONS

- Where are people settled in South Africa and what is the extent of towns and villages?
- What is the proximity of urban and rural settlements to water, road and mines?
- What is the population density within a certain radius from Telecoms Infrastructure?



Coverage:	South Africa
Formats:	Vector files: ESRI shape files Excel files: Summarise by user defined area
Attributes:	Population estimate; Concentration range (none, low-, medium- or high concentration)
Latest release:	2014

RELATED DATA LAYERS:

- SA National Surface Water Layer
- SA National Mining Layer
- SA National Wetland Layer
- SA National Land Cover
- SA National Land Use Change
- Settlement Layers for most countries in Africa

location-intelligence
and **spatial**
indicators

