

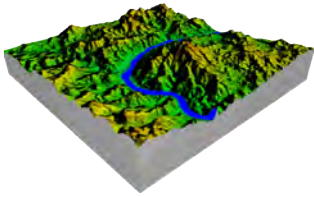


## DATA PRODUCT SHEET

# SOUTH AFRICA BASELINE LAND COVER

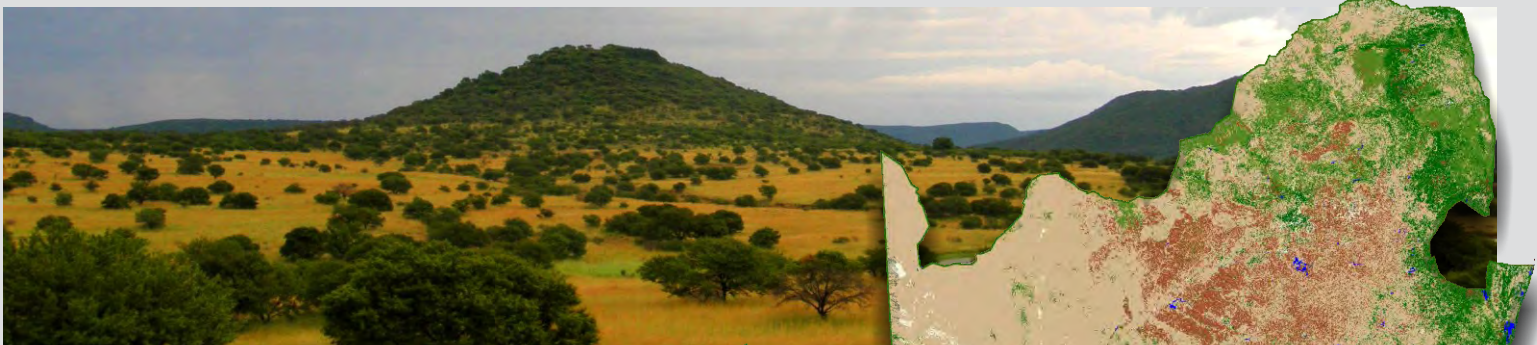
The **GEO**TERRAIMAGE, 2013-14 South Africa National Baseline land-cover © dataset, has been generated from multi-seasonal, 30 metre resolution Landsat 8 satellite imagery, captured between April 2013 and June 2014. The land-cover dataset provides seamless data coverage for the whole country. A hill-shaded version is also available for backdrop applications and functions.

The 7 main class land-cover product represents a foundation level land cover, which can be used as the basis for more detailed or additional user defined land cover mapping.

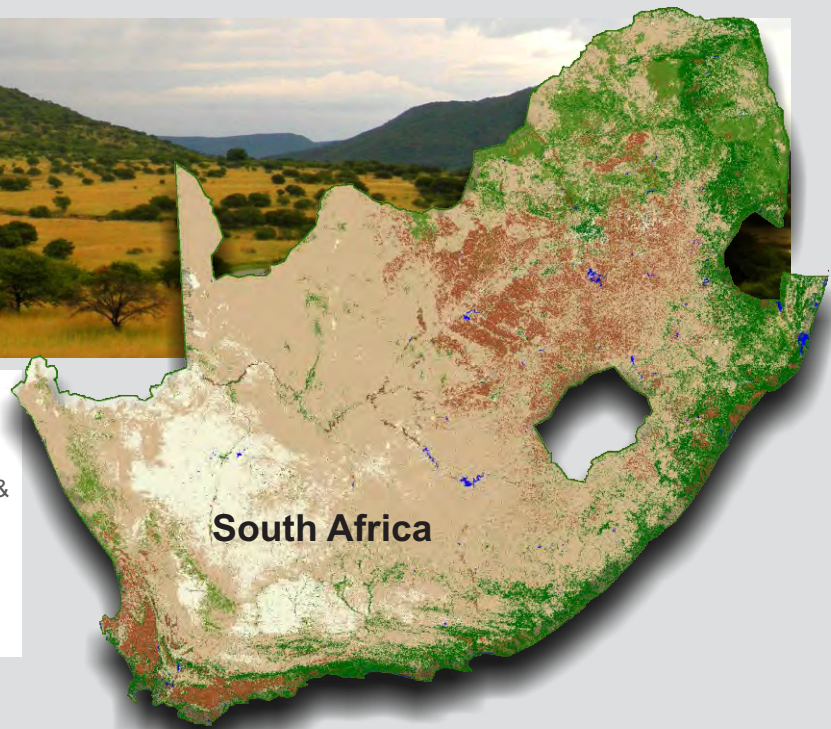


### CORE QUESTIONS

- How will a national development corridor impact the vegetation cover across the country?
- What is the surface extent of water bodies in South Africa?
- What extent of the country has been commercially cultivated?



**Coverage:** South Africa  
**Formats:** Raster files: 30 m cells (Erdas img)  
**Attributes:** 7 main classes: Water, Bare, Low Vegetation & grassland, Tree / Bush dominated, Tree Dominated, Cultivated, Sports & Golf courses  
**Latest release:** 2014



### RELATED DATA LAYERS:

- SA National Surface Water Layer
- SA National Mining Layer
- SA National Wetland Layer
- SA National Detailed Land Cover
- Land Cover for Namibia, Botswana, Zimbabwe, Mozambique, Swaziland and Lestotho

location-intelligence  
and **spatial**  
indicators

