

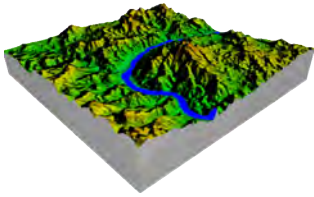


DATA PRODUCT SHEET

SOUTH AFRICA DETAIL LAND COVER

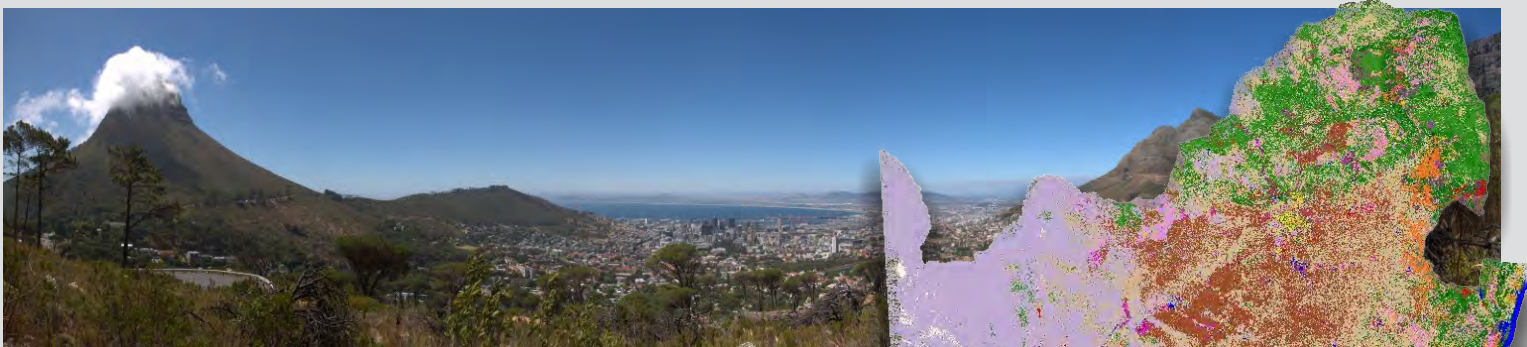
The GEOTERRAIMAGE, 2013-14 South Africa National detail land-cover © dataset, has been generated from multi-seasonal, 30 metre resolution Landsat 8 satellite imagery, captured between April 2013 and June 2014. The land-cover dataset provides seamless data coverage for the whole country. A hill-shaded version is also available for backdrop applications and functions.

Over 30 land cover classes have been mapped, including features such as wetlands, forests, mines, agriculture, built up, erosion, and vegetation.



CORE QUESTIONS

- How are sensitive areas impacted by land use?
- What is the surface extent of cultivation in South Africa?
- What extent of South Africa has been built up?



Coverage: South Africa
Formats: Raster files: 30 m cells (Erdas img)
Attributes: Over 30 land cover classes: Vegetation & Built up areas
Latest release: 2014/2015

RELATED DATA LAYERS:

- SA National Surface Water Layer
- SA National Mining Layer
- SA National Wetland Layer
- SA National Baseline Land Cover
- Land Cover for Namibia, Botswana, Zimbabwe, Mozambique, Swaziland and Lestotho

location-intelligence
and **spatial**
indicators

