



## DATA LAYER SHEET

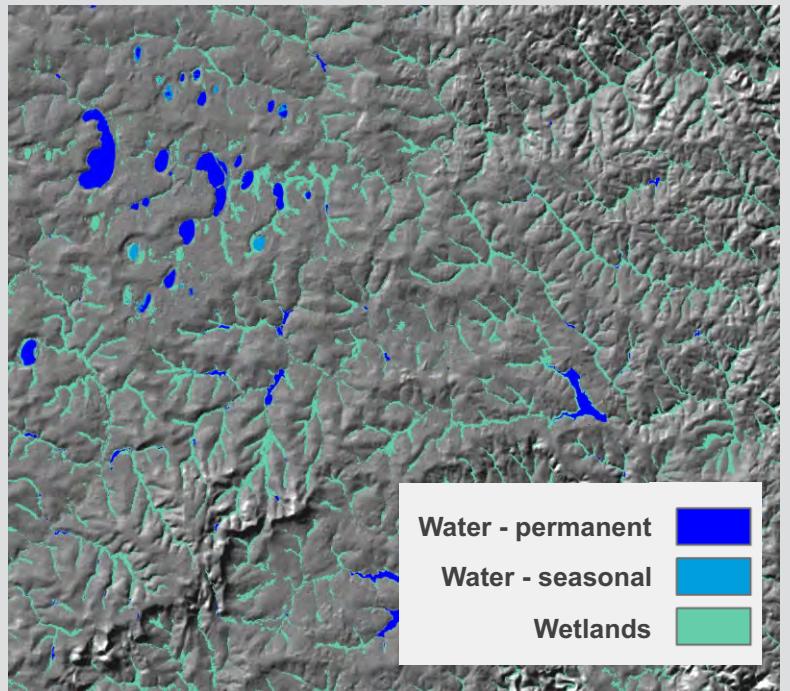
# SA NATIONAL WETLAND LAYER



The wetland dataset represents the surface footprint of wetland systems, as modelled on multi-date Landsat 8 imagery, acquired between April 2013 and March 2014. Wetland extents were detected using the seasonal differences of wetland vegetation between wet and dry image acquisition dates. The wetland extent typically represents the extent of low herbaceous wetland vegetation showing spectral characteristics indicative of a wetland environment. No separation is made in terms of wetland type or period of visibility. The modelled wetlands are a very good indicator of wetland presence or absence in a specific area, as well as density and distribution of wetland features.

### CORE QUESTIONS

- What is the extent of wetlands in a specific area?
- What is the proximity of wetland systems to mining activities?
- Which wetland systems are at risk due to future development plans or land use changes?



<b>Coverage:</b>	South Africa
<b>Formats:</b>	Vector files: ESRI shape files Raster files: 30 m cells (Erdas img) Excel files: Summarise by user defined area
<b>Attributes:</b>	1 class: Wetlands
<b>Latest release:</b>	2014

### RELATED DATA LAYERS:

- SA National Surface Water Layer
- SA National Mining Layer
- SA National Forest Plantation Layer
- SA National Land Cover
- Land Cover for Namibia, Botswana, Zimbabwe, Mozambique, Swaziland and Lestotho

location-intelligence  
and **spatial**  
indicators

