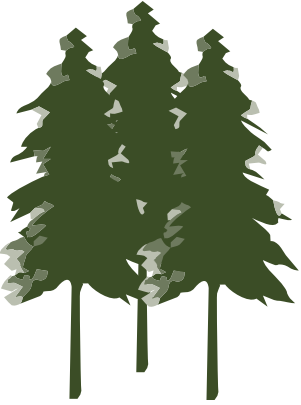




DATA LAYER SHEET

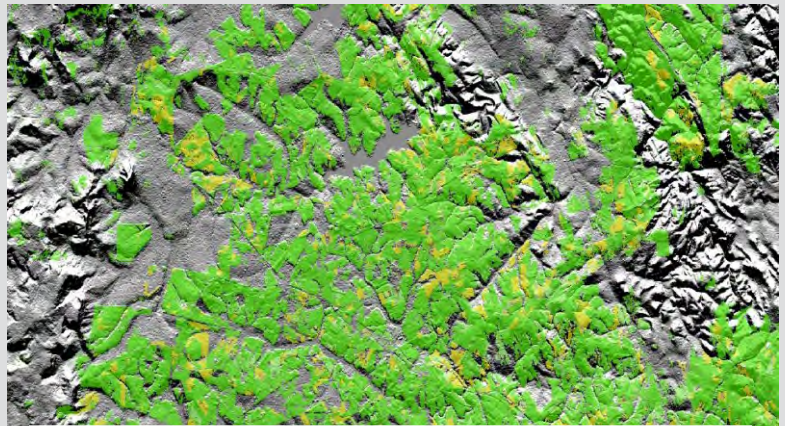
SA NATIONAL PLANTATION LAYER



The forest plantation dataset represents the combined extent of commercially planted tree plantations, woodlots and windbreaks, as detectable on multi-date Landsat 8 imagery acquired between April 2013 and March 2014. The dataset is sub-divided into (a) mature standing trees, (b) young, recently planted trees, and (c) temporarily clear-felled stands. No distinction is made between tree genus types. The forestry plantation dataset is digitally modeled, not visually mapped or manually interpreted. This dataset has been generated as part of the GEOTERRA IMAGE Landsat 8 South African 2013-14 National Land cover © commercial data product.

CORE QUESTIONS

- What is the extent of mature and young plantations in a specific area?
- Where are clear-felled stands during the 2013 / 2014 season?
- What is the proximity of forestry activities to other features such as water bodies, major routes, sawmills etc?



Coverage: South Africa

Formats: Vector files: ESRI shape files
Raster files: 30 m cells (Erdas img)
Excel files: Summarise by user defined area (e.g. Cadastre, EA, Catchment boundary)

Attributes: 3 classes: Mature trees, Young trees, Clear-felled stands

Latest release: 2014

Example				
Area of Interest	Mature trees (ha)	Young trees (ha)	Clear-felled stands (ha)	Total Area (ha)
Area 1	350 ha	123 ha	15 ha	2050 ha
Area 2	20 ha	53 ha	23 ha	134 ha
Area 3	62 ha	321 ha	0 ha	577 ha

RELATED DATA LAYERS:

- SA National Surface Water Layer
- SA National Mining Layer
- SA National Wetland Layer
- SA National Land Cover
- Land Cover for Namibia, Botswana, Zimbabwe, Mozambique, Swaziland and Lestotho

location-intelligence
and **spatial**
indicators

