



DATA LAYER SHEET



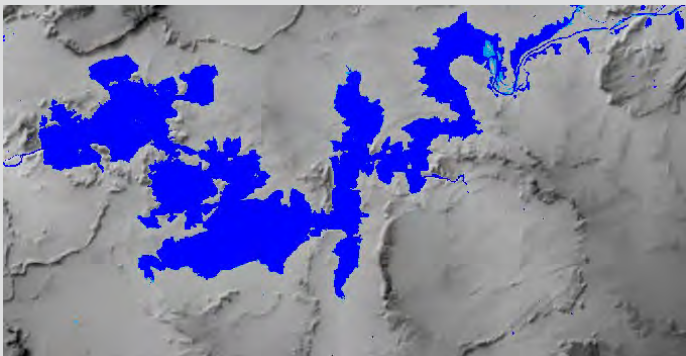
SA NATIONAL WATER LAYER

The water dataset represents the surface footprint of both seasonal and permanent water surfaces, as detected on multi-date Landsat 8 imagery acquired between April 2013 and March 2014. Permanent water features represent surface water that is detectable throughout the year, whereas seasonal water features are only visible in some of the image dates.

Permanent water typically represents the minimum water extent and seasonal water typically represents the maximum water extent. No distinction is made between natural and man-made water features.

CORE QUESTIONS

- What is the extent of seasonal and permanent surface water in a specific area?
- What percentage of a catchment is covered by seasonal and permanent surface water?
- What is the proximity of surface water to other features such as human settlements, mining, irrigated fields, etc?



Coverage: South Africa

Formats: Vector files: ESRI shape files
Raster files: 30 m cells (Erdas img)
Excel files: Summarise by user defined area (e.g. Cadastre, EA, Catchment boundary)

Attributes: Two classes: Permanent & Seasonal water

Latest release: 2014

Example				
Catchment Management area	Permanent Water ha	Permanent Water %	Seasonal Water ha	Seasonal Water %
Catchment1	1000 ha	2.9%	655 ha	1.9%
Catchment2	34 500 ha	12.1%	20814 ha	7.3%
Catchment3	5320 ha	4.3%	10640 ha	8.6%

RELATED DATA LAYERS:

- SA National Surface Mining Layer
- SA National Forest Plantation Layer
- SA National Wetland Layer
- SA National Land Cover
- Water Layers for Namibia, Botswana, Zimbabwe, Mozambique, Swaziland and Lestotho

location-intelligence
and **spatial**
indicators

