

# LOCATION INTELLIGENCE DATA PRODUCT

## CULTIVATION TYPE ANALYSIS:

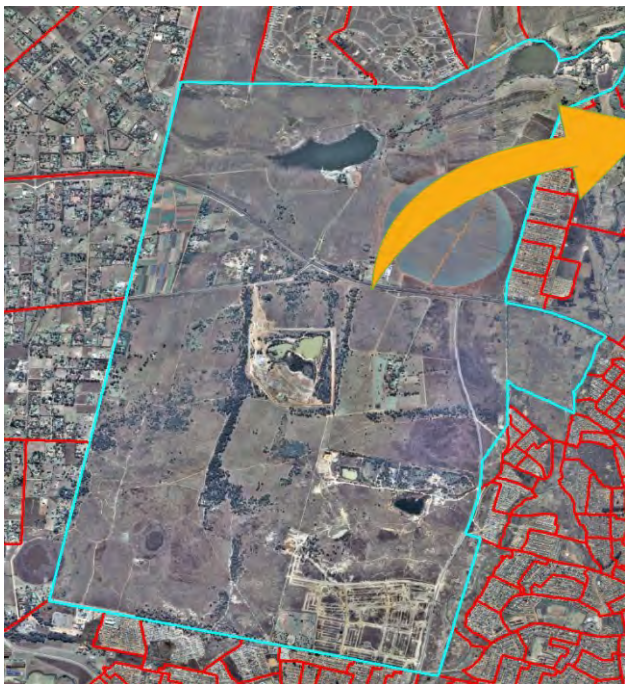
The *Cultivation Type Analysis* data set provides a summary on the type of agricultural fields and the area in hectares for each type. The STATS SA 2011 EA polygon boundaries are used as a universal unit for reporting.



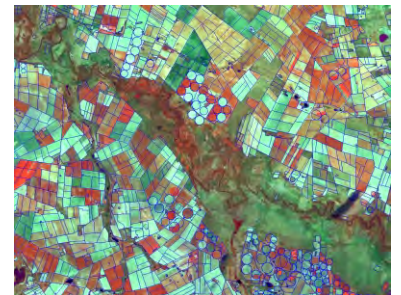
*Agricultural  
Data*

## CORE QUESTIONS:

- How many hectares of agricultural fields are there within an EA?
- How many hectares of agricultural fields are under irrigation within an EA?
- How many hectares of subsistence cultivation are within an EA?



Dry Land Irrigation:	153 Ha
Horticulture:	0 Ha
Irrigation:	67 Ha
Shading:	0 Ha
Subsistence:	61 Ha
Total Crops:	280 Ha
EA size:	1388 Ha



Input:  
Vector field boundaries

<b>Coverage:</b>	SA National
<b>Unit of sale:</b>	National, Provincial, District
<b>Format:</b>	Vector Polygons

## FULL PRODUCT CONTENT:

- Total hectares of dryland agricultural (rainfed) fields
- Total hectares of horticultural fields
- Total hectares of irrigated agricultural fields
- Total hectares of agricultural fields under shading
- Total hectares of subsistence agricultural fields
- Total hectares of all agricultural fields



\*EA= Stats SA 2011 Enumerator Area