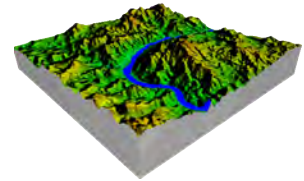


LOCATION INTELLIGENCE DATA PRODUCT

TELECOMMUNICATIONS CLUTTER DATA:

Telecommunications *Clutter data*, used for radio frequency planning within wireless communication networks, is available from GTI from 50 cm level for select built up urban areas, to 40 meter national data sets for most of Africa.



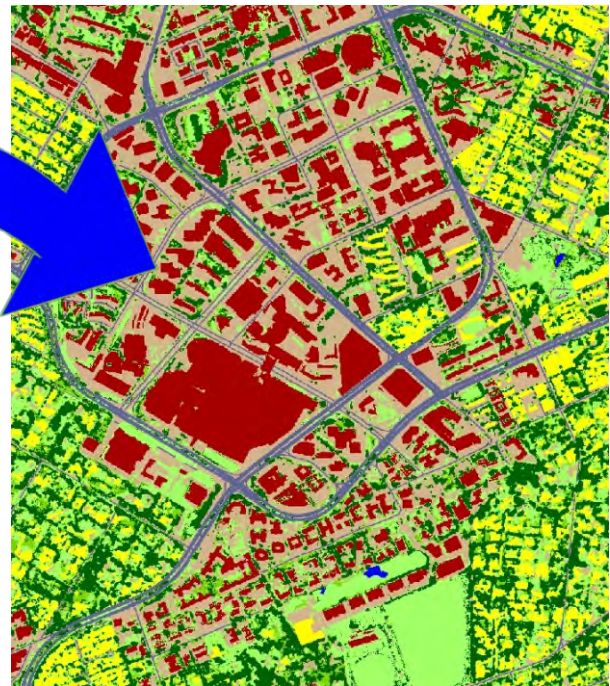
*Height
Data*

CORE QUESTIONS:

- Where should new cellular towers be located to optimise the network?
- How will buildings and trees influence radio waves from a cellular tower?



Photography



50 cm Clutter

Coverage:	South Africa, Africa (select countries)
Unit of sale:	National, Regional, Areas of interest
Format:	Raster

FULL PRODUCT CONTENT:

- Land cover and land use information integrated into Telecommunication clutter data.
- Digital Elevation Models provided to compliment the clutter at the appropriate resolution
- Information content can be adapted to the client's specific requirements

