

# PRODUCT SUMMARY SHEET

## UNDEVELOPED STANDS:

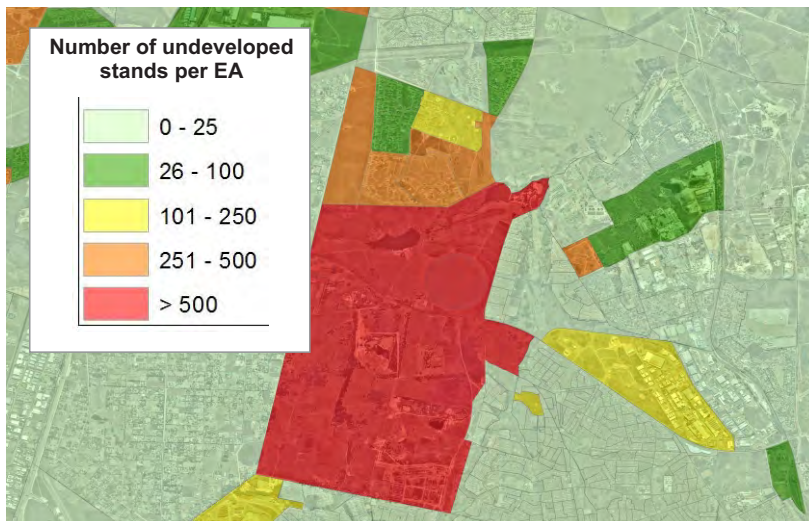
The *Undeveloped Stands* data set provides information on the number of stands, the total stand area and the average stand size of surveyed, yet undeveloped stands per EA.



*Data for  
Development*

## CORE QUESTIONS:

- How many surveyed, yet undeveloped stands are there per EA?
- What is the total number of surveyed, yet undeveloped stands per EA?
- What is the average area of surveyed, yet undeveloped stands per EA?



**Coverage:** Gauteng  
**Future roll-out:** Cape Town & eThekweni  
**Unit of sale:** Gauteng, Metros  
**Format:** Vector Polygons  
**Deliverable:** STATS SA 2011 EA polygon boundaries with applicable attributes.

## KEY DATA INPUTS:

- Gauteng August 2013 cadastre data
- GTI Building Based Land Use data set (2010)

## FULL PRODUCT CONTENT:

- The number of surveyed, undeveloped stands per EA
- The total m<sup>2</sup> of surveyed, undeveloped stands per EA
- The average m<sup>2</sup> of surveyed, undeveloped stands per EA



\*EA = Stats SA 2011 Enumerator Area