

# PRODUCT SUMMARY SHEET

## GROWTH POTENTIAL:

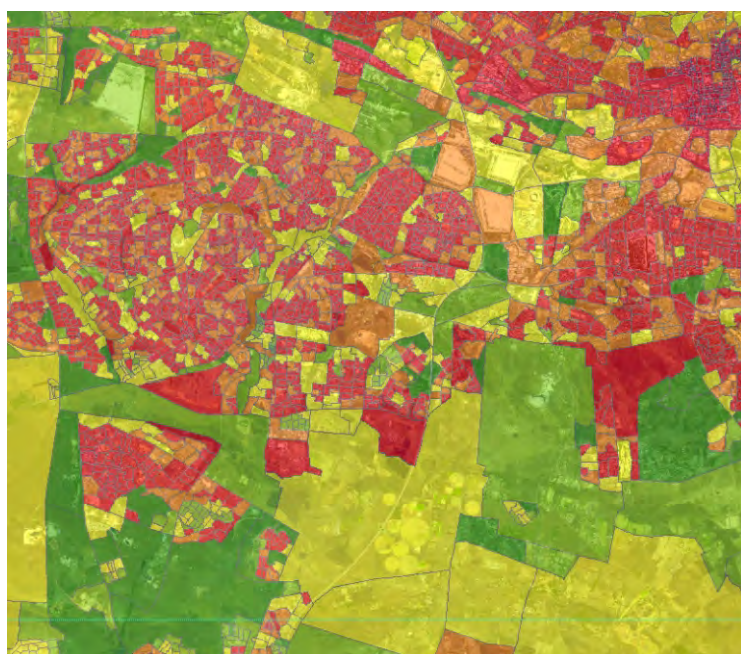
The "**Growth Potential**" data set provides an indication of the area of an EA that is likely to change its current land use as expressed in three classes: high, medium and low.



*Data for  
Development*

## CORE QUESTIONS:

- What percentage of a specific EA has a high, medium or low probability of land use change?
- Which areas are not suitable for development planning?



### Low Probability of change (%)

0.00 - 30.00
30.01 - 52.00
52.01 - 73.00
73.01 - 90.00
90.01 - 100.00

<b>Coverage:</b>	Gauteng
<b>Future roll-out:</b>	National
<b>Unit of sale:</b>	Provincial, District, Municipal
<b>Format:</b>	Vector Polygons
<b>Deliverable:</b>	STATS SA 2011 EA polygon boundaries with applicable attributes.

## FULL PRODUCT CONTENT:

### High probability

- Areas within an EA that indicate a high probability of land use change.

### Medium probability

- Areas within an EA that indicate a medium probability of land use change.

### Low probability

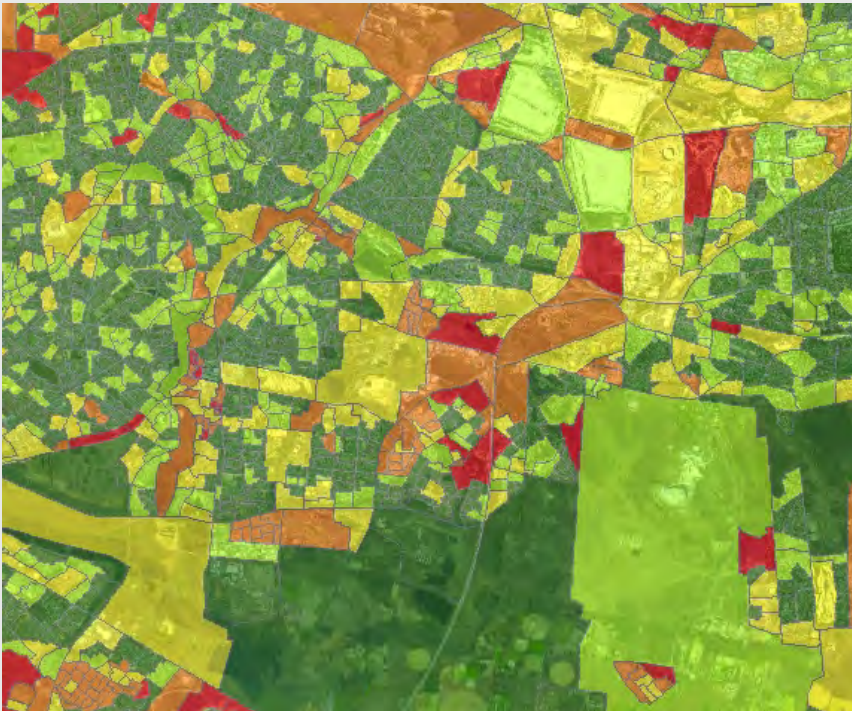
- Areas within an EA that indicate a low probability of land use change.



\*EA= Stats SA 2011 Enumerator Area



# PRODUCT SUMMARY SHEET



### High Probability of change (%)

0.00 - 9.00
9.01 - 25.00
25.01 - 44.00
44.01 - 66.00
66.01 - 100.00

### KEY DATA INPUTS:

- Gauteng Urban Land Cover
- GTI Gauteng Province Cemeteries data set
- GTI 2010 Building based land use data set
- GTI 2001 & 2012 Open Space data set
- GTI Gauteng Primary, Secondary and Tertiary land use data set



*Data for  
Development*



High probability of change: 56%  
 Medium probability of change: 4%  
 Low probability of change: 40%