

# PRODUCT SUMMARY SHEET

## GAUTENG OPEN SPACES:

The *Gauteng Open Spaces* data set can be supplied as either a temporal (2001 & 2010) raster or a vector data set based on the specific requirements, to quantify the possible changes in official parks and other public and private open spaces in Gauteng.



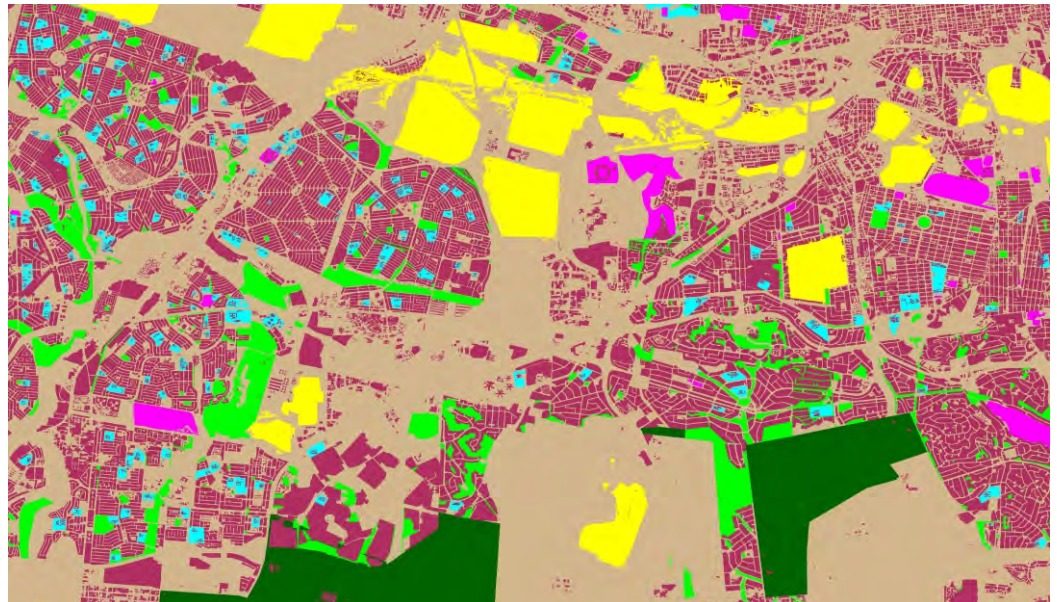
*Land Cover  
Data*

### CORE QUESTION:

- What changes occurred in private and public open space in Gauteng between 2001 and 2012?

### Gauteng Open Space

	Unclassified
	Parks
	Reserves
	Open Undefined
	Recreation
	Education
	Built-up
	Mining



### FULL PRODUCT CONTENT:

- The raster data set classifies the open areas in Gauteng into the following classes: Parks, Reserves, Open undefined, Recreation, and Education. Built up areas and mining are included for comparison purposes and classified as “non-open” space in the data set.
- The vector data set can be used to indicate change between 2001 and 2010 and highlights changes in parks and open spaces.

<b>Coverage:</b>	Gauteng
<b>Unit of sale:</b>	Provincial, District,
<b>Format:</b>	Vector Polygons & Raster
<b>Deliverable:</b>	2.5m Raster data set & Parks & open space polygons

location-intelligence  
and **spatial**  
indicators

