

## PRODUCT SUMMARY SHEET

### SA POPULATION DISTRIBUTION:

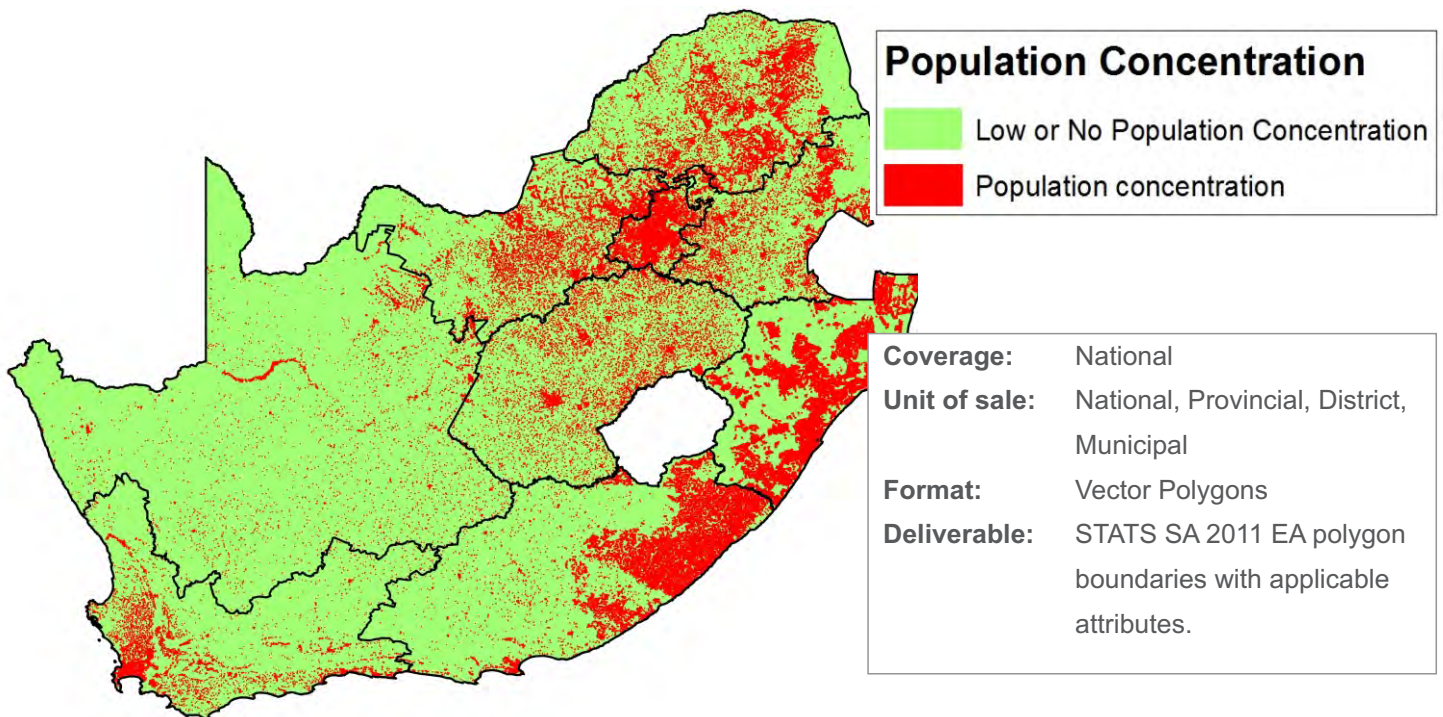
The *Population distribution* data set provides an indication of the distribution of the population concentration of the country as well as an estimated population count. EA polygon boundaries are used as a universal unit for reporting.



*Demographic  
Data*

### CORE QUESTIONS:

- Where are the areas that have a high population concentration?
- Where are the areas that have no population or a low population concentration?
- What is the estimated population count of an area?



### FULL PRODUCT CONTENT:

#### Population concentration

- Indication of population concentration (Concentrated, Low or No Population) at EA level

#### Population

- Estimated population count per EA
- Outline of built-up areas with an estimated population count per EA



\*EA= Stats SA 2011 Enumerator Area