

# PRODUCT SUMMARY SHEET

## DEMOGRAPHICS ESTIMATES:

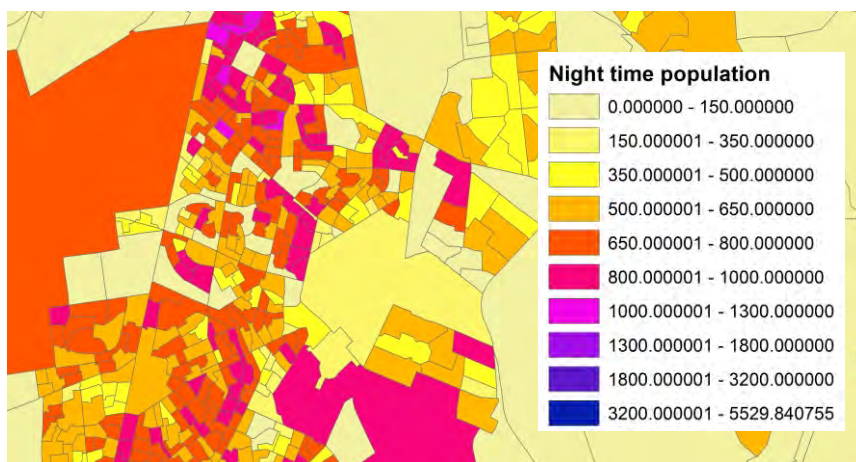
The Demographics data set provides insight into the current demographic distribution per EA in terms of Gender, Race and Age Group as well as the dominant group in each of these categories.



## Demographic Data

### CORE QUESTIONS:

- How many males and/or females are there? / What is the dominant gender?
- How many people are there per race group? / What is the dominant race group?
- How many people are there per age group? / What is the dominant age group?
- What is the total night time population per EA? / How many households are there?



<b>Coverage:</b>	Gauteng
<b>Unit of sale:</b>	National, Provincial, District, Municipal
<b>Format:</b>	Vector Polygons
<b>Deliverable:</b>	STATS SA 2011 EA polygon boundaries with applicable attributes.

### FULL PRODUCT CONTENT:

#### Gender

- Number of males and females per EA
- Dominant gender per EA

#### Race

- Number of people per race group - black, coloured, asian, white or other
- Dominant race group per EA

#### Age Group

- The number of people per predefined age group
- Dominant age group class per EA

#### Population

- Number of people living in an EA

#### Household count

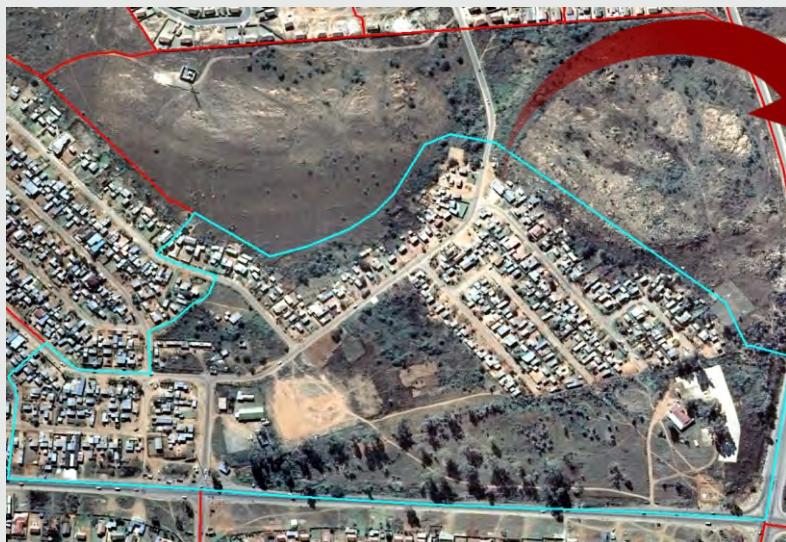
- Number of households per EA



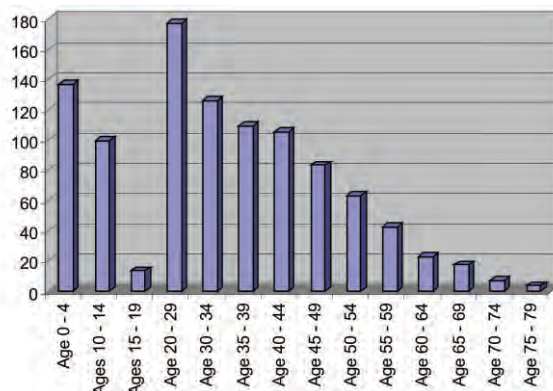
\*EA= Stats SA 2011 Enumerator Area



## PRODUCT SUMMARY SHEET



Normalised demographic data



### KEY DATA INPUTS:

- 2010 Building based land use data set, used to model 2011 Census data
- AfricaScope LSM data

### Dominant Gender & Dominant Race

- NO DOMINANT RACE
- FEMALE, ASIAN
- FEMALE, BLACK
- FEMALE, COLOURED
- MALE, ASIAN
- MALE, BLACK
- MALE, COLOURED



Demographic  
Data

