

PRODUCT SUMMARY SHEET

PRIMARY, SECONDARY & TERTIARY LAND USE:

This data set provides a summary of the Primary, Secondary and Tertiary **Building Based Land Use** per EA, as well as a further classification of residential structures where appropriate.



CORE QUESTIONS:

- What is the primary, secondary and tertiary building based land use per EA
- What are the main residential (building based land use) classes in order of significance per EA



Coverage:	Gauteng
Future roll-out:	Cape Town Municipality, eThekweni Municipality
Unit of sale:	Provincial, District, Municipal
Format:	Vector Polygons
Deliverable:	STATS SA 2011 EA polygon boundaries with applicable attributes

Primary Land use:	Residential
Residential type:	Formal
Secondary Land use:	Commercial
Tertiary Land use:	Industrial

FULL PRODUCT CONTENT:

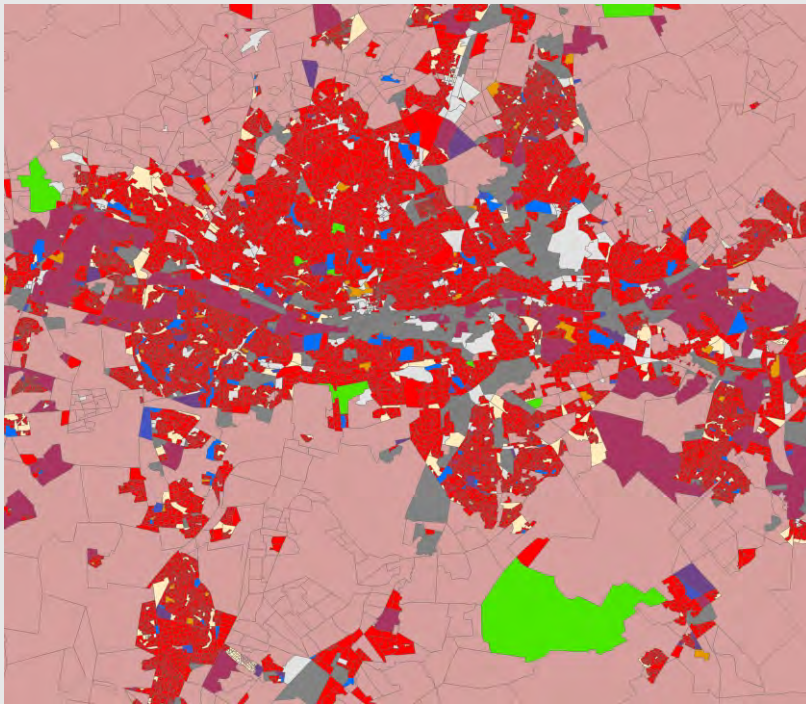
- The primary, secondary and tertiary building based land use per EA
- The main residential (building based land use) classes in order of significance per EA



*EA= Stats SA 2011 Enumerator Area



PRODUCT SUMMARY SHEET



PRIMARY LAND USE

	Agriculture
	Cemeteries
	Commercial
	Conservation
	Education
	Industrial
	Institutions
	Mining
	Recreation
	Residential
	Vacant

KEY DATA INPUTS:

- GTI Building Based Land Use point data sets comprising of a 2001 data set and the latest available data set
- GTI 2.5 m land cover data set

Detailed residential analyses

