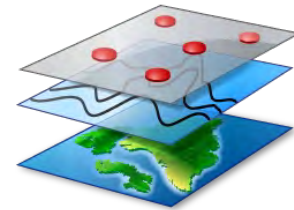


# PRODUCT SUMMARY SHEET

## BUILDING BASED LAND USE CHANGE:

The **Building Based Land Use Change** data set is a temporal data set based on the 2001 and 2010 building based land use points data. Change analysis was performed on the 16 main classes as well as the 17 tertiary residential classes and summarised per EA.

The EA based **Building Based Land Use Change** data set provides a summary of all 2001 and 2010 land use classes summarised per EA, as well as the extent of change which occurred over the 10 year period.



**Land Use  
Data**

## CORE QUESTIONS:

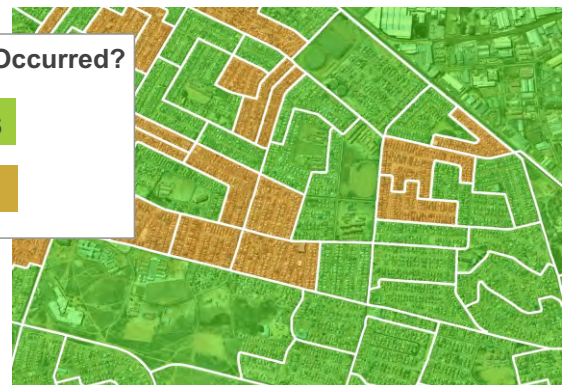
- What land use changes have occurred within an EA over the last 10 years?
- In which enumerator areas have positive, negative or no change occurred?
- In which land use class(es) have the majority change occurred?

<b>Coverage:</b>	Gauteng
<b>Future roll-out:</b>	Cape Town Municipality, eThekweni Municipality
<b>Unit of sale:</b>	Provincial, District, Municipal
<b>Format:</b>	Vector Points & Polygons
<b>Deliverable:</b>	STATS SA 2011 EA polygon boundaries with applicable attributes. Building based land use points data sets (2001 & 2002)

### Has Change Occurred?

YES

NO



## FULL PRODUCT CONTENT:

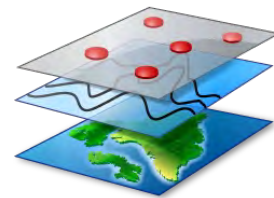
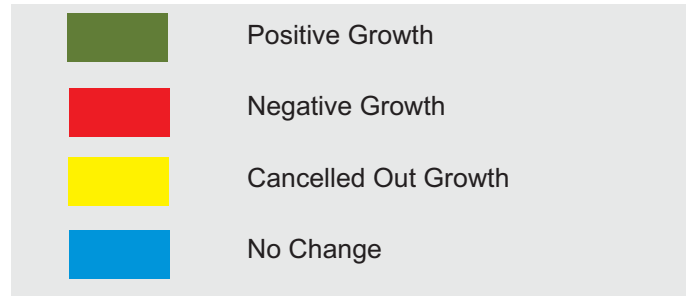
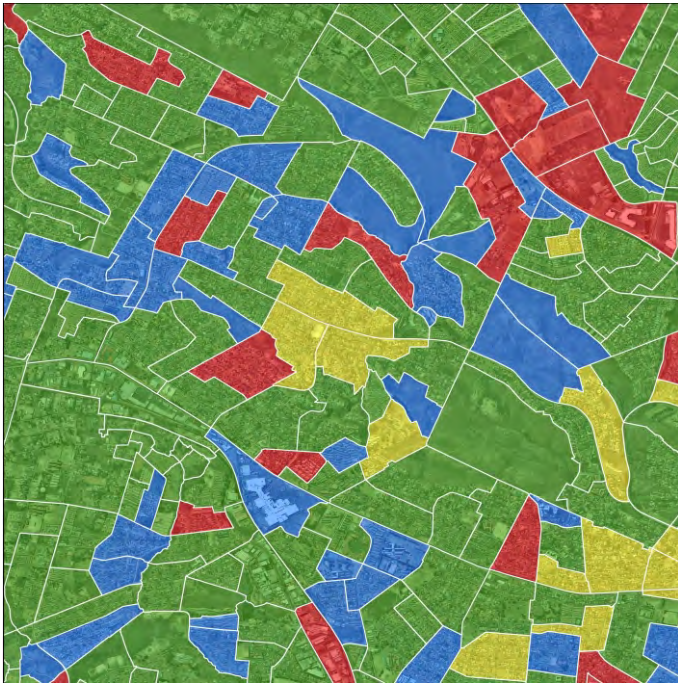
- Core point data sets containing 16 primary land use classes which are sub-divided into 70 secondary classes (2001 & 2010)
- Core point data sets containing the main residential class which is divided into an additional 17 tertiary classes (2001 & 2010)
- A polygon data set containing a summary per EA indicating change per class (percentage and difference count) in terms of number of units
- A polygon data set indicating whether any land use change has occurred (yes/no)
- A polygon data set indicating the category of land use change (positive, negative, no change)
- A polygon data set indicating land use classes in which positive change occurred
- A polygon data set indicating land use classes in which negative change occurred
- A polygon data set indicating land use class(es) in which the majority positive growth occurred
- A polygon data set indicating land use class(es) in which the majority negative growth occurred



\*EA= Stats SA 2011 Enumerator Area

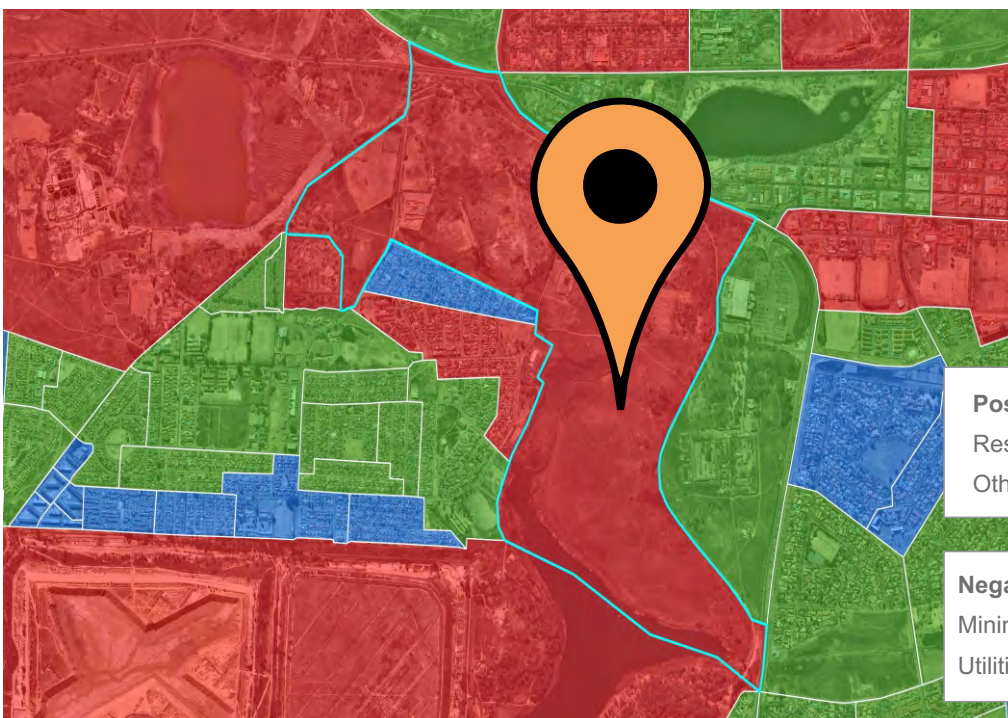


# PRODUCT SUMMARY SHEET



*Land Use  
Data*

**KEY DATA INPUTS:** 2001 and 2010 Building based land use data sets



**Positive Growth:**  
Residential: + 30 Structures  
Other: + 3 Structures

**Negative Growth:**  
Mining: - 55 Structures  
Utilities & Infrastructure: - 3 Structures